

## New Plant for Laurel Soap Manufacturing Co.

The new building for the Laurel Soap Manufacturing Company now in process of construction, is to be located at the southeast corner of Almond and Tioga Streets, Philadelphia. The entire building will be of reinforced concrete and will have a frontage of 80 ft. on Tioga Street, and a depth of 180 ft. on Almond Street. It will consist of two stories and a basement. In the rear of the manufacturing plant and directly adjacent to it are a three-truck garage, boiler room and steaming-out room for steaming oils from drums. This portion of the building is 30 ft. x 80 ft., with a 90 ft. radial brick chimney in connection with the boiler room.

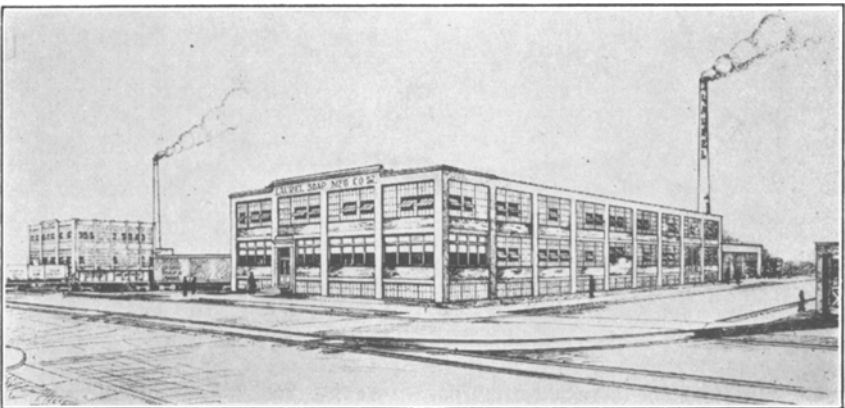
The plant is provided with a railroad siding and a loading platform on the east side which takes in about two-thirds of the length of the building. The large soap boilers, which will increase the present capacity of this concern considerably, are located in the rear of the building directly adjoining the

boiler room. The pumping machinery and light storage of fats, oils, caustic, potash, etc., are in the basement but remote control switches to all pumping machinery allows these materials to be delivered to any part of the building without the attendant being near the pumps.

The general offices and the laboratory extend across the full front of the building on the Tioga Street side. The plant is so designed that extensions can be made.

This concern has enjoyed a steady and substantial growth since its organization. It makes a specialty of textile soaps and oil for the entire industry, having many individual products of its own origin. The project now under way marks an important step forward in the history of this organization.

The new building was designed and is being erected by the John N. Gill Construction Company, Philadelphia.



*New Plant of Laurel Soap Manufacturing Company in Philadelphia*